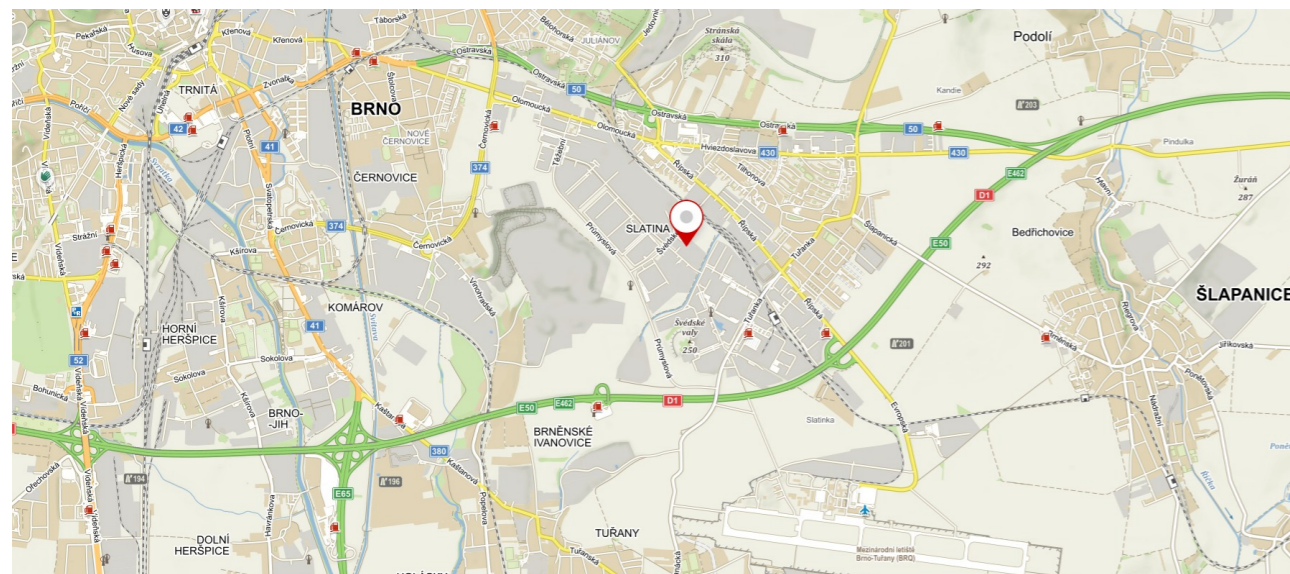
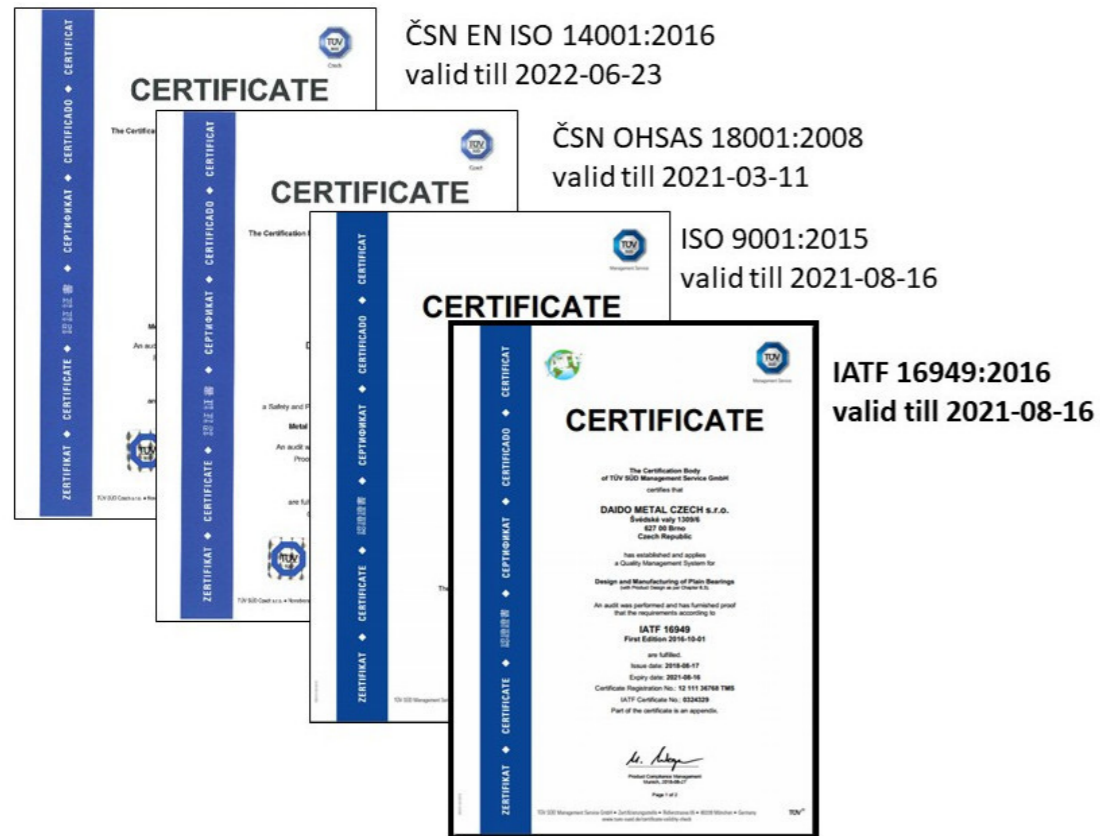


DAIDO METAL CZECH



DAIDO METAL CZECH s.r.o.
Švédské Valy 1309/6
Brno – Slatina, 627 00
Web: <http://daidometal.cz>

Contacts:

Factory Manager: Tomáš Kubík +420 724 652 503 kubik@daidometal.com
Production Manager: Vilém Kvasnica +420 724 652 599 kvasnica@daidometal.com



Free production capacity, for new customers.

Very high precision production
Air-conditioned hall
Cleanliness

Example of our products from brass and stainless steel

10 CNC TYPE L20 CITIZEN

Possibility to machine different types of materials

6 axes

17 rotary tools

20 standard tools

Max workpiece size is D=20mm and max length 200mm

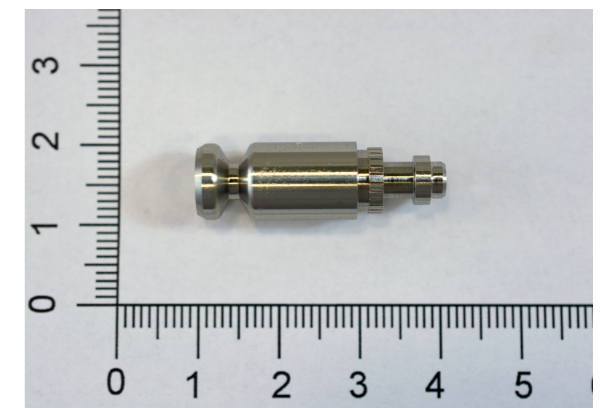
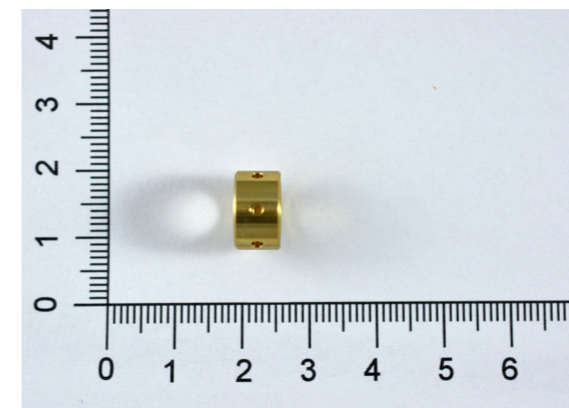
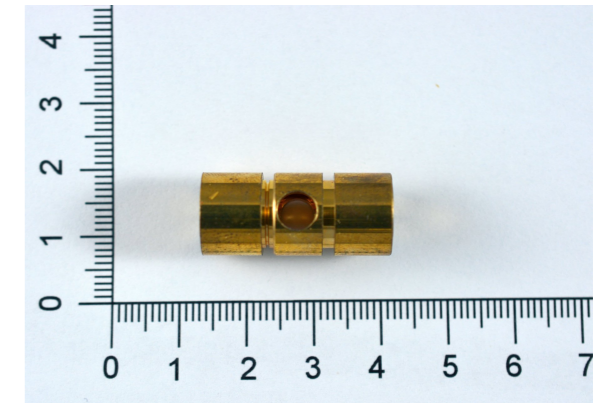
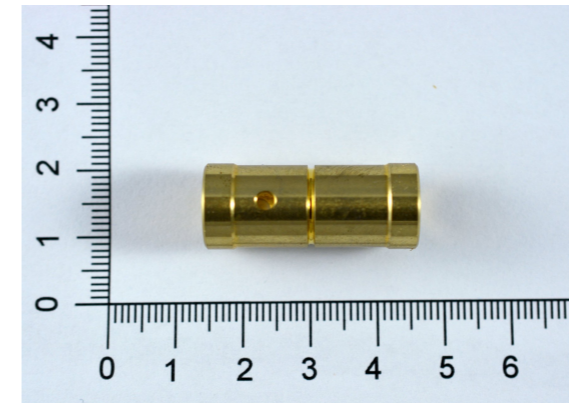
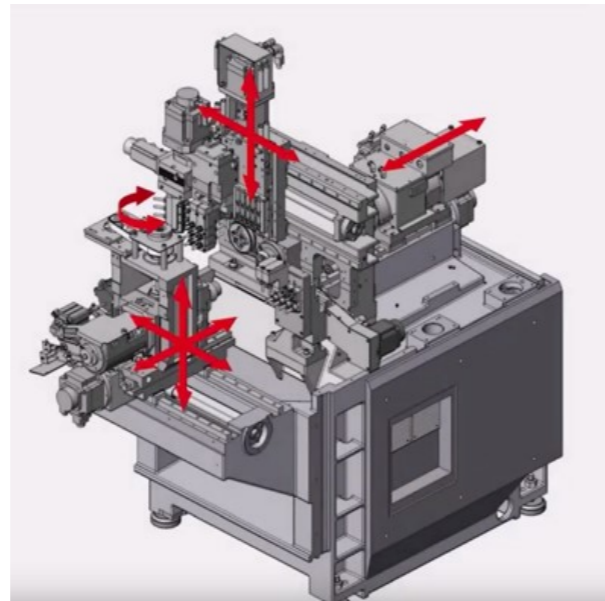
POSSIBILITY OF MACHINING

Turning

Drilling

Milling

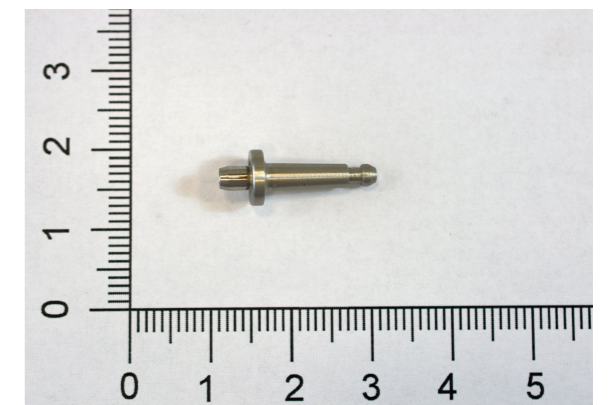
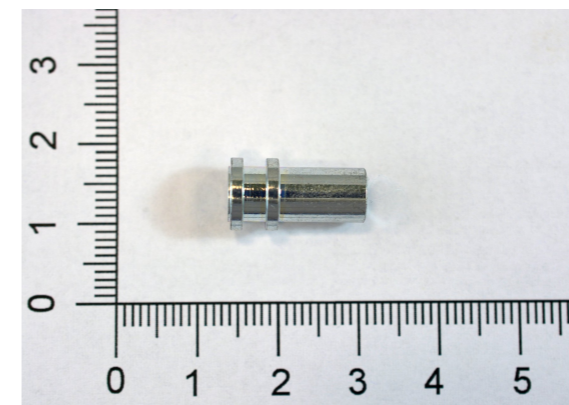
Inner /outer threading



Citizen machines offer up to 6 axis machining and are equipped bar loader.

Parts from a simple bushing or pin to the very complex parts all done on one machine in a single cycle.

Sub spindle works simultaneously or independent of the main spindle and the ability to cross drill or thread cutting.



The driven tools on the vertical holder are controlled with the new B axis. Drilling and milling can thus be carried out in various angular positions.

The guide bush can be disassembled or assembled in a short change-over time.

The tapping spindle is equipped with an additional Y-axis. This means that 6 tools (3 stations driven) are available for the front machining and 8 stations for back machining.

